



Dorset Drive NEWSLETTER

Sept-Oct

Welcome back to all of our children and parents who have returned from the summer holidays, we have missed you all and we are happy you are back with us safe and healthy

Since returning from the summer holidays there are lots of new faces and lots of new friends to get to know. In both rooms we have been focusing on 'All about us' and getting to know the new children, new ladies and our new families. We have been reading family stories, creating family portraits and asking all parents to send in their family photos from home on parent zone.



'Hello' to Imogen, who has just started with us in the Farmer's room, she is very excited to get to know all of the children and their families.

'Goodbye' to Tahmina who has transferred to Bury college as their lunch time assistant. She is sad to leave us but excited for the new change.



The children have loved returning to our new renovated garden, especially our new mud kitchen and decking area. We have been gardening and watering the plants and exploring the new herb garden. The children have been apple picking and counting how many new bugs we can identify during our bug hunts.

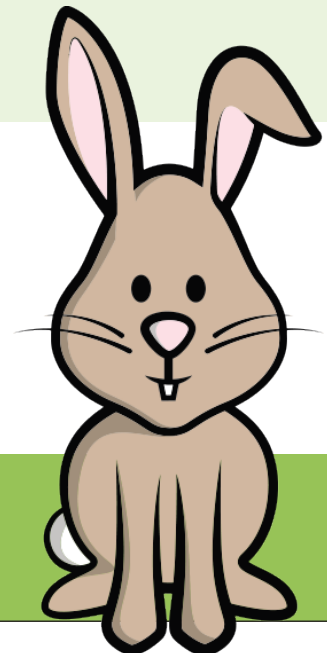
Over the next couple of weeks we will be learning about season changes and Autumn colours. We will explore the woodlands and send out homework bags to collect conkers, leaves and other natural objects to bring in to share with everybody. We will be creating kites and wind charms and extending the teaching and learning around the weather changes.

We also will be exploring activities around Halloween and getting creative whilst being festive!

Our Contact Details are as follows:-

Tel – 0161 761 5770 - Email: fn7@fisherfeldchildcare.co.uk

Or keep in touch with iConnect/ParentZone,
please ask a member of staff if you need help



Stone Snake

Last month the children who attended nursery through the holidays decorated stones and pebbles from our woodlands to contribute to a world record stone snake around the Lido lake in Clarence Park, Bury. This stone snake has been added to by hundreds of people over lockdown. The stones are decorated with patterns, colours and pictures. The children were very excited to spot their stones on the pictures!



NSPCC fundraising

We would like to thank all parents and families for their generous donations over the past year to the various NSPCC events/appeals each nursery has hosted. Together, with your help, we have been able to raise £6392 for the NSPCC across Fisherfield this year! This money will serve to make the lives of vulnerable children across the country better. We have been raising money for the NSPCC since 2009 and we are proud to say that with the support of the families who attend our nurseries, we have raised £84,145 in just over a decade.

After consulting with the Nursery Council in each of the Fisherfield nurseries, we have made the decision to start supporting the RSPCA. The children have demonstrated an interest and love for animals, and this will be a great way to build on their interests. As part of our support for the RSPCA, we will be sponsoring a dog and will continue to host exciting and fun fundraising events as soon as it is safe to do so!



Sprout

Sprout is a loveable little pup who likes making new puppy pals. He needs your support to help him grow up to be a life-changer.

WE HAVE ADOPTED A GUIDE DOG AND OUR DORSET DRIVE DOG IS SPROUT!

Our Contact Details are as follows:-

Tel – 0161 761 5770 - Email: ffn7@fisherfeldchildcare.co.uk

Or keep in touch with iConnect/ParentZone,
please ask a member of staff if you need help